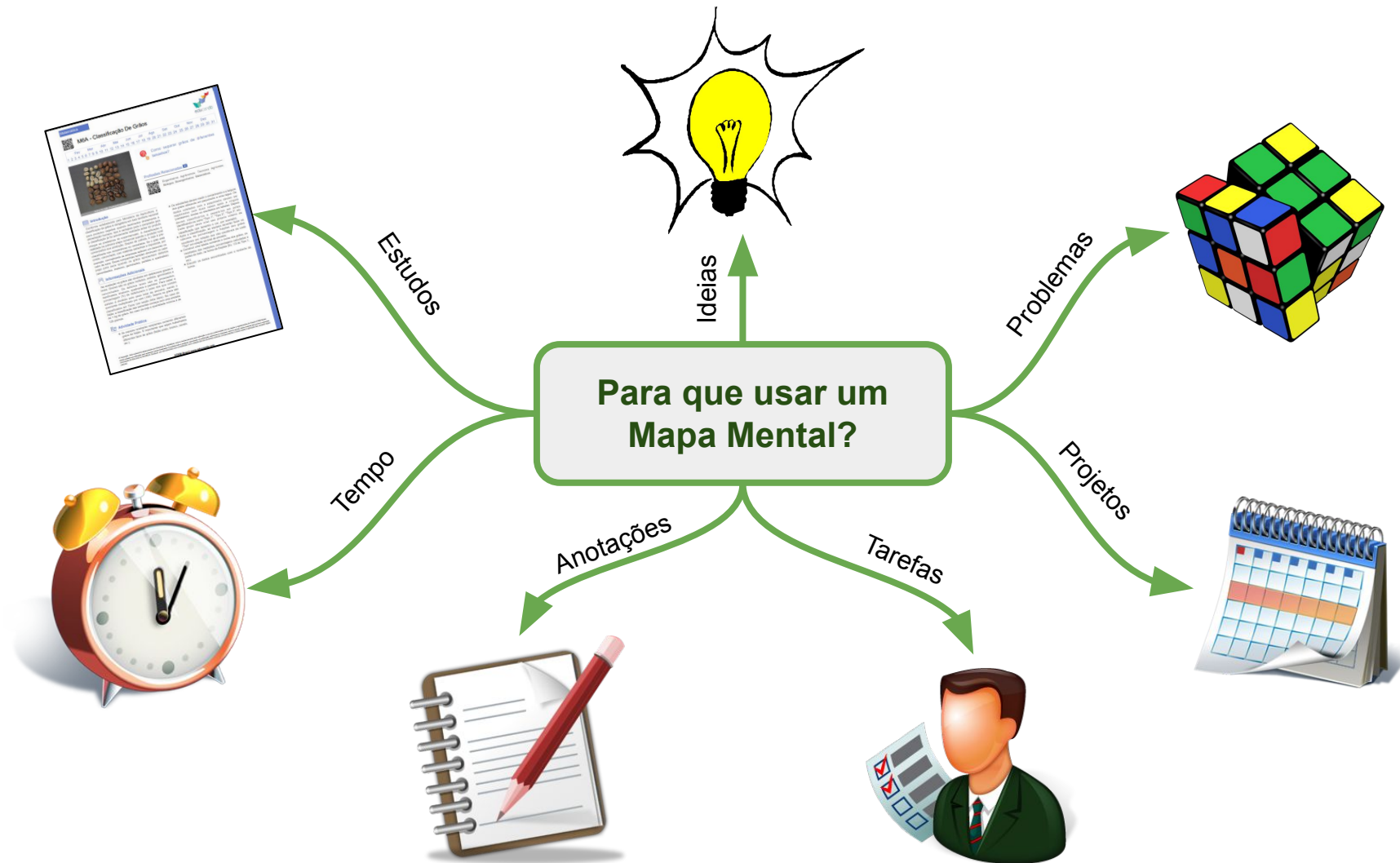
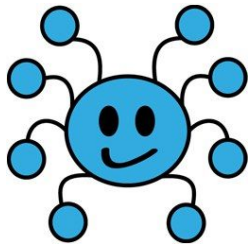


FEV			MAR			ABR			MAI			JUN			JUL			AGO			SET			OUT			NOV			DEZ		
1	2	3	4	5	6	7	8	9	10	11	12	13	14	15	16	17	18	19	20	21	22	23	24	25	26	27	28	29	30	31		

Tutorial Mapa Mental

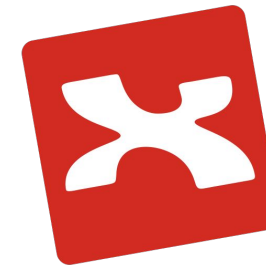


Mind Mup (internet) e Xmind (instalado no computador) são ferramentas de mapas mentais



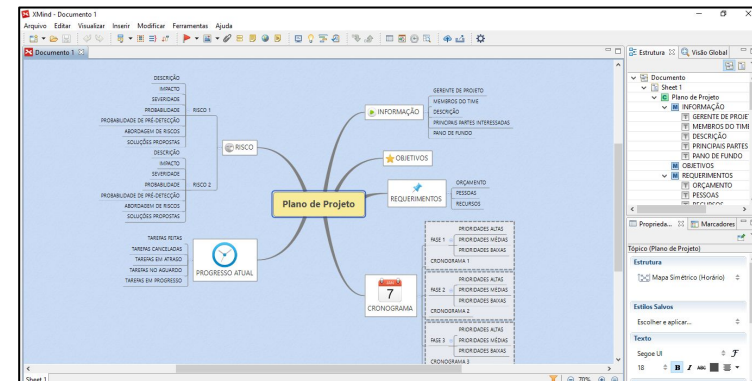
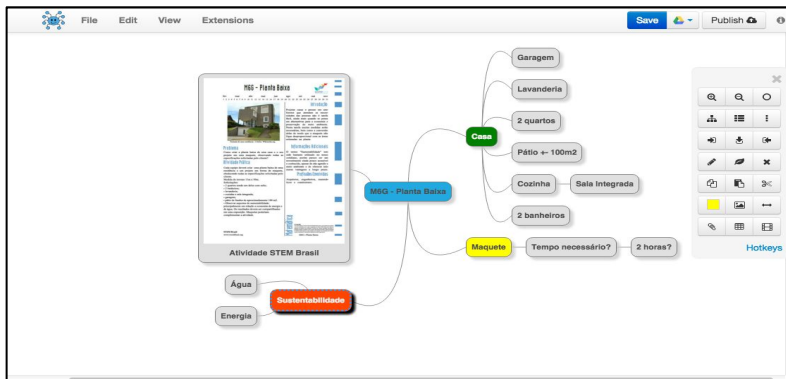
MIND MUP

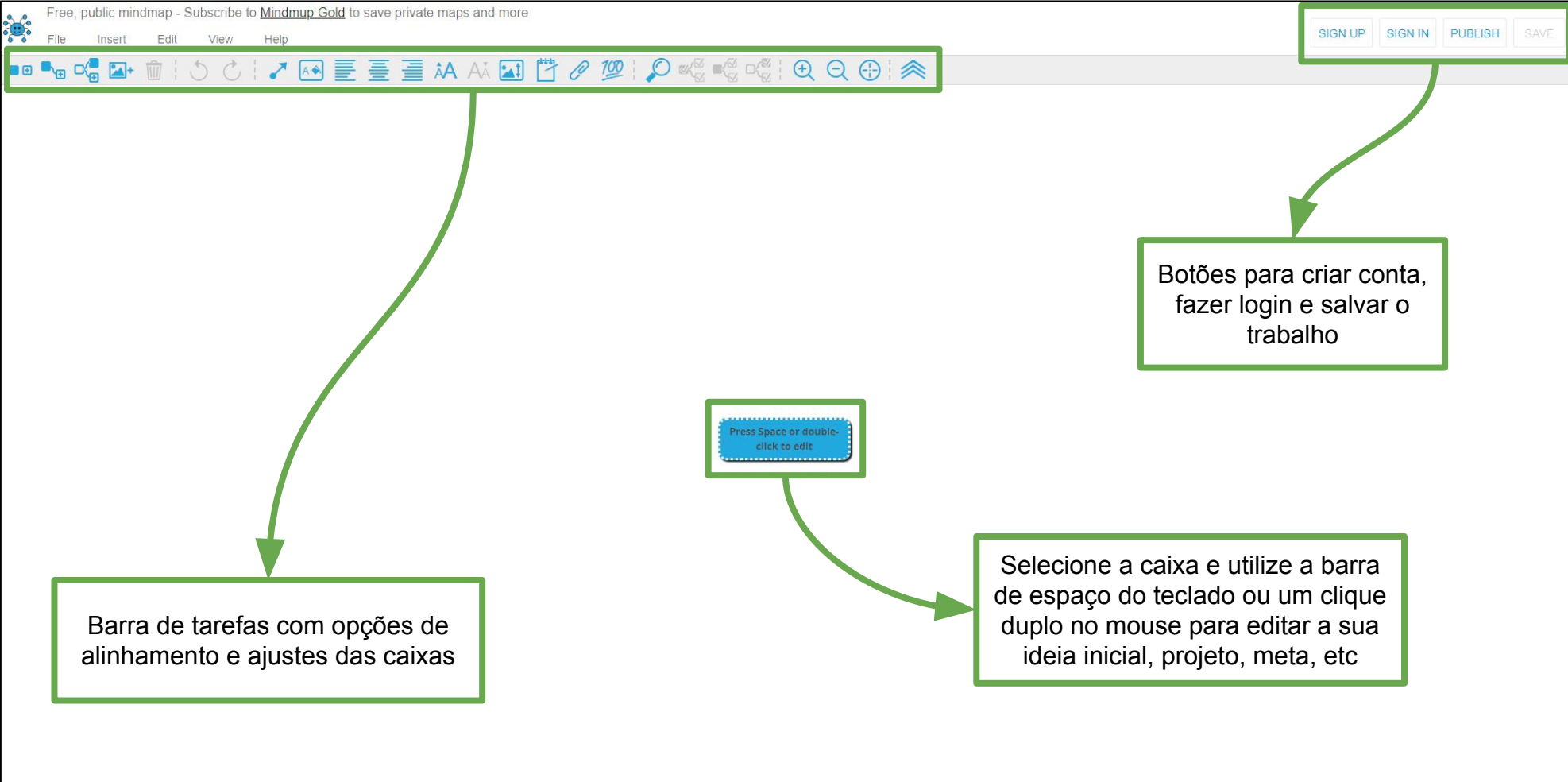
Link: goo.gl/NlrNWV



XMIND

Link: goo.gl/iziU2t





Free, public mindmap - Subscribe to [Mindmap Gold](#) to save private maps and more

File Insert Edit View Help

SIGN UP SIGN IN PUBLISH SAVE

Barra de tarefas com opções de alinhamento e ajustes das caixas

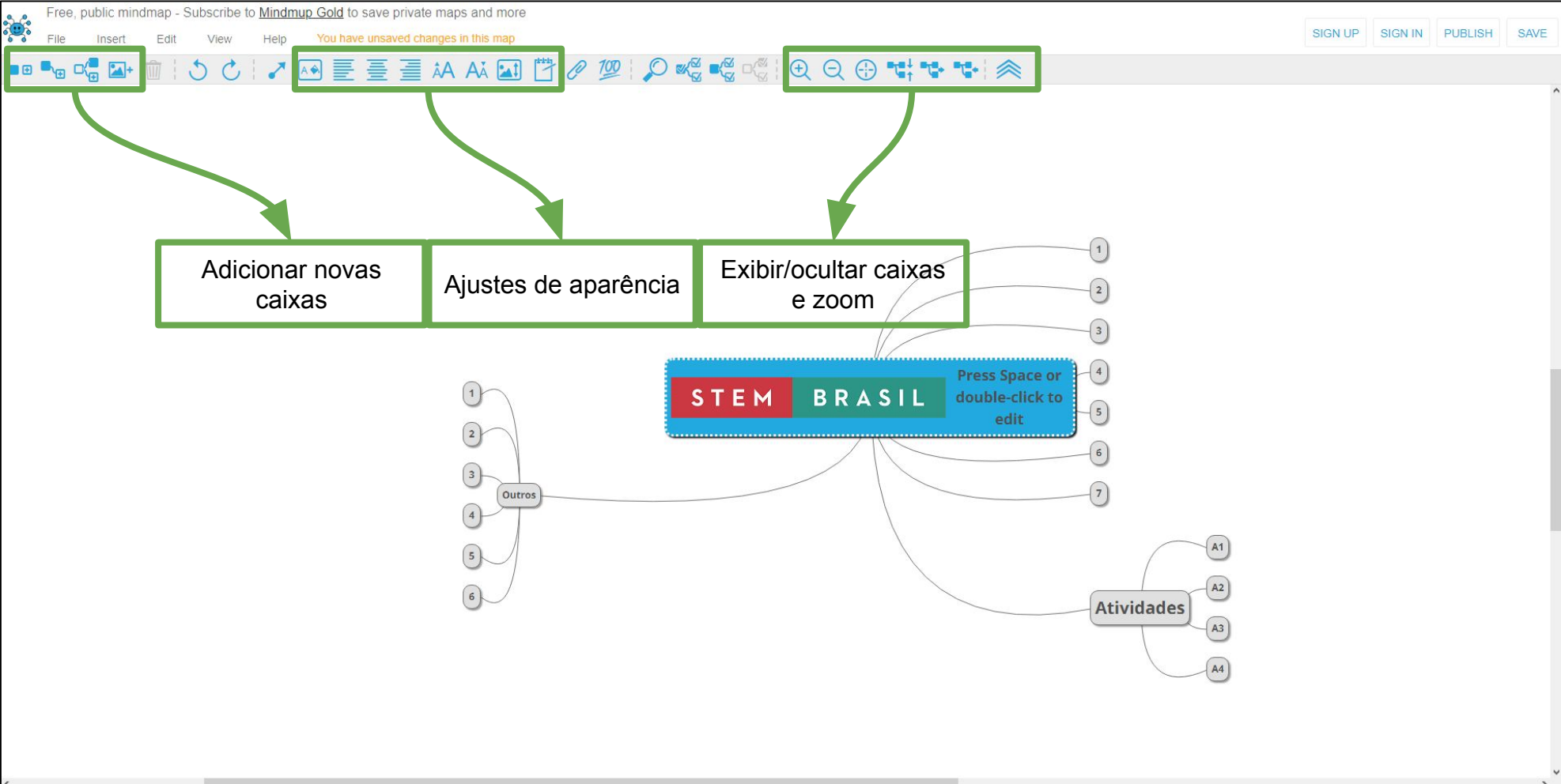
Press Space or double-click to edit

Botões para criar conta, fazer login e salvar o trabalho

Selecione a caixa e utilize a barra de espaço do teclado ou um clique duplo no mouse para editar a sua ideia inicial, projeto, meta, etc

The screenshot shows the Mindmap Gold web interface. At the top, there is a navigation bar with 'File', 'Insert', 'Edit', 'View', and 'Help' menus. To the right of the navigation bar are buttons for 'SIGN UP', 'SIGN IN', 'PUBLISH', and 'SAVE'. Below the navigation bar is a toolbar with various icons for editing and formatting. The main area of the interface is a large white space where mind maps are created. Three green arrows point from specific parts of the interface to text boxes: one from the toolbar to a box describing it as a task bar for alignment and box adjustments; one from the 'SIGN UP', 'SIGN IN', and 'SAVE' buttons to a box describing them as buttons for account creation, login, and saving; and one from a blue tooltip that says 'Press Space or double-click to edit' to a box explaining that users can use the spacebar or a double-click to edit their ideas.





The screenshot displays the Mindmap Gold web application interface. At the top, there is a header with the text "Free, public mindmap - Subscribe to Mindmap Gold to save private maps and more" and a menu with "File", "Insert", "Edit", "View", and "Help". A notification bar indicates "You have unsaved changes in this map". On the right side of the header, there are buttons for "SIGN UP", "SIGN IN", "PUBLISH", and "SAVE".

The main workspace contains a mind map with a central node labeled "STEM BRASIL" (with a sub-note "Press Space or double-click to edit"). The mind map has three main branches:

- Left Branch:** A node labeled "Outros" with six numbered sub-nodes (1-6).
- Right Branch:** A node labeled "Atividades" with four lettered sub-nodes (A1, A2, A3, A4).
- Top Branch:** A horizontal bar containing three callout boxes: "Adicionar novas caixas", "Ajustes de aparência", and "Exibir/ocultar caixas e zoom".

Three green callout boxes from the top toolbar point to these three callout boxes in the mind map. The toolbar includes icons for adding new boxes, adjusting appearance, and showing/hiding boxes and zooming.

